

Module 5 LO4

Skull: Unique Features

Dr. Lisa Brinn

lbrinn@fiu.edu

4. Unique Features of the Skull

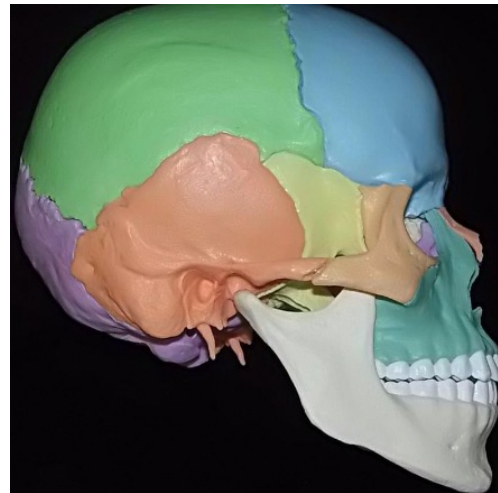
- The skull exhibits the following unique features:
 1. Sutures
 2. Paranasal sinuses
 3. Fontanelles

1. Sutures

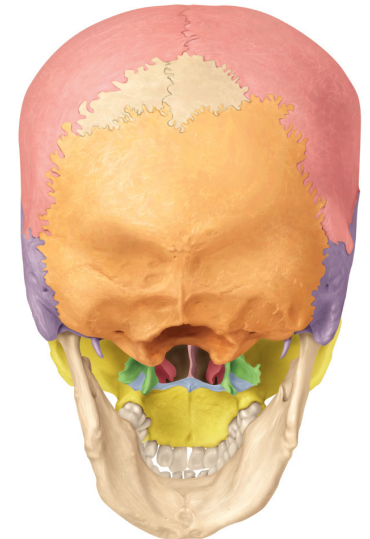
- Coronal
- Sagittal
- Lambdoid
- Squamous



λ



LATERAL

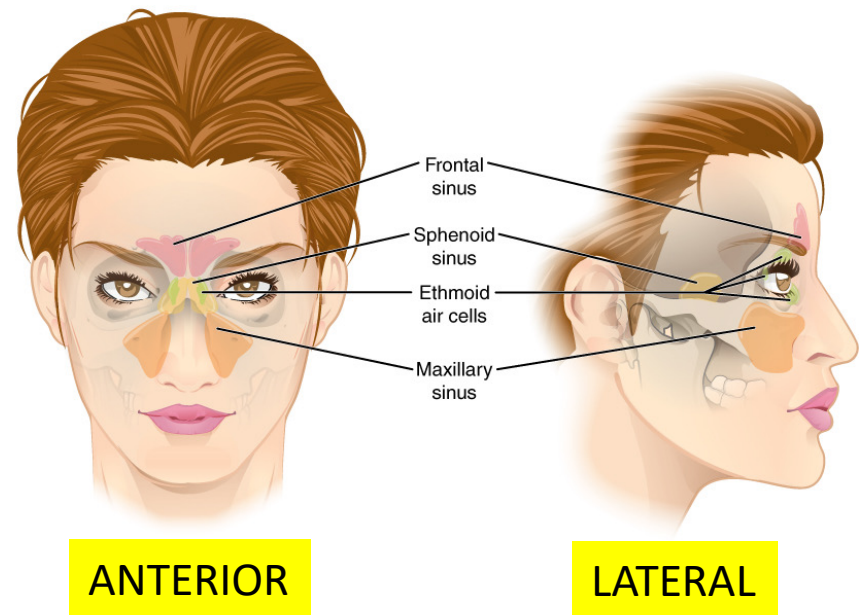


SUPERIOR

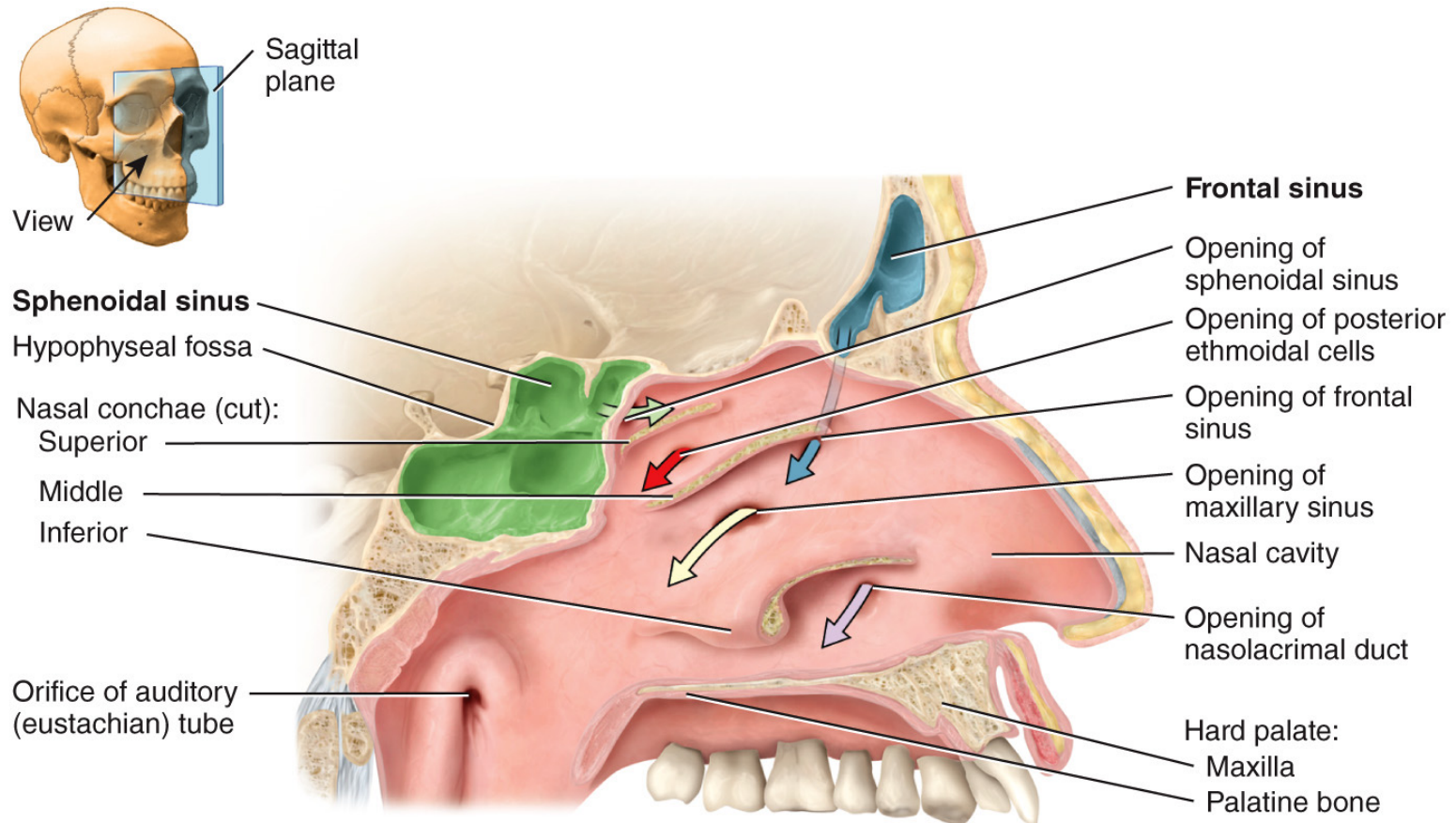
POSTEROINFERIOR

2. Paranasal Sinuses

- Cavities within frontal, sphenoid, maxillary and ethmoid bones
- Function:
 - Lighten the skull's mass
 - Play a role in resonance.



Paranasal Sinuses



Fontanels at Birth

- Found in developing embryos
- Consists of cartilage and mesenchyme

